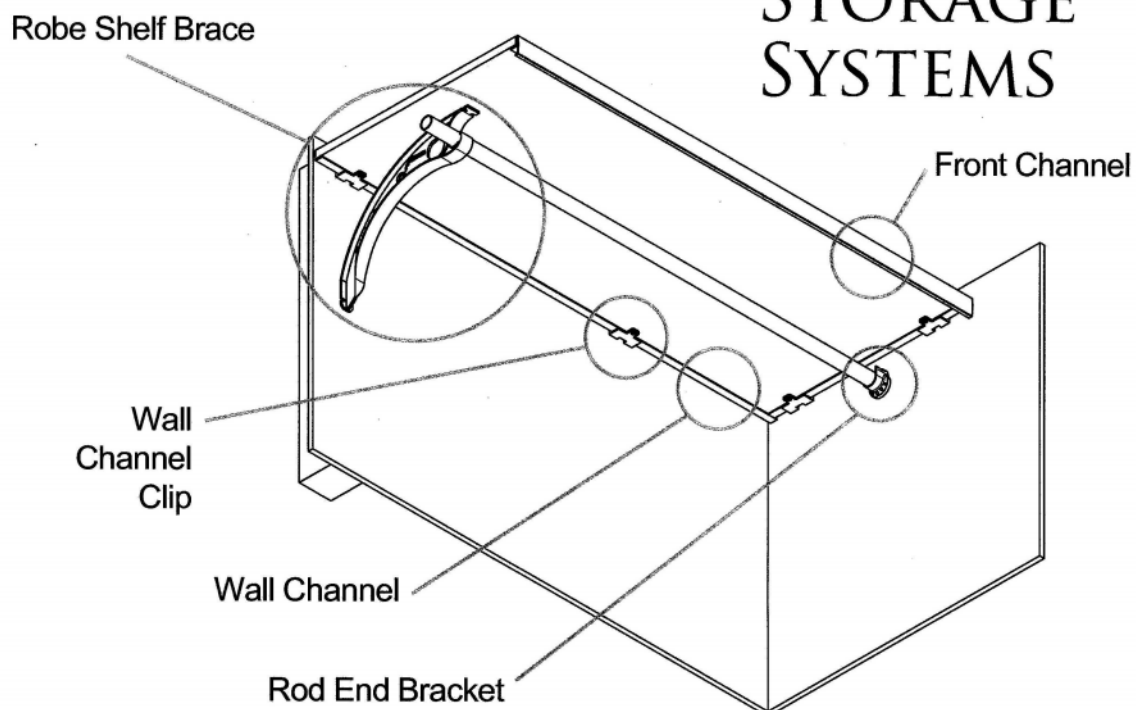


**RAPI-MOUNT®**  
MELAMINE SHELVING

## Instructions manual

SIMPLY  
BETTER  
STORAGE  
SYSTEMS



## **COPYRIGHT**

This technical manual remains the property of Oz Shelving Systems Pty Limited and contains privileged information which is the subject of copyright and the manual or any part thereof may not be reproduced, copied or loaned in any form without the written permission of Oz Shelving Systems Pty Limited.

This manual is to be returned to Oz Shelving Systems Pty Limited when requested.

## **DISCLAIMER**

Whilst every effort has been made to ensure the technical details contained within this manual are accurate, Oz Shelving Systems Pty Limited can take no responsibility for any loss or damage whatsoever arising as a result of any errors contained in this manual.

Also, interpretation of standards or codes within this manual is Oz Shelving Systems Pty Limited interpretation for such codes. Responsibility for code compliance remains with the user of this manual. In some cases product dimensions may vary or be changed without notice. The user of this manual should not act or rely upon on any information contained in this manual without first obtaining appropriate professional advice relating to their particular circumstances.

Oz Shelving Systems Pty Limited disclaims all liability for loss or damage suffered by any party who acts or fails to act in reliance of this manual.

## Table of contents

<b>Page 1.1</b>	RAPI-MOUNT Components Gallery
<b>Page 1.2</b>	RAPI-MOUNT Components Gallery cont.
<b>Page 2.1</b>	Cutting and BOM Details
<b>Page 2.2</b>	Cutting and BOM Details cont.
<b>Page 3.1</b>	Gable Preparation
<b>Page 4.1</b>	Installation Steps 1 & 2 Drilling
<b>Page 4.2</b>	Installation Steps 3 & 4 Drilling cont.
<b>Page 4.3</b>	Installation Steps 5 & 6 Fit Wall Clips
<b>Page 4.4</b>	Installation Steps 7 & 8 Fit Gable & Top Shelf
<b>Page 4.5</b>	Installation Steps 9 & 10 Fit Front Channel
<b>Page 4.6</b>	Installation Steps 11 & 12 Fit Hanging Rod and Lock Shelves to Wall
<b>Page 4.7</b>	Installation Steps 13 Fit Bracing shelf
<b>Page 5.1</b>	Front View of Fixing Locations
<b>Page 5.2</b>	End View of Fixing Locations
<b>Page 6.1</b>	L shaped cutting formula
<b>Page 6.2</b>	U shaped cutting formula

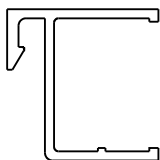
---

## Revisions

Date	Amendment details	Issue version
30/10/21	Re issue	B

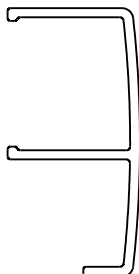
### RM005

Back Channel  
5.6m white (16 pack)



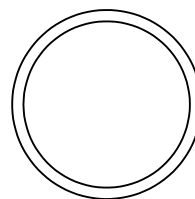
### RM006

Front Channel  
5.6m white (10 pack)



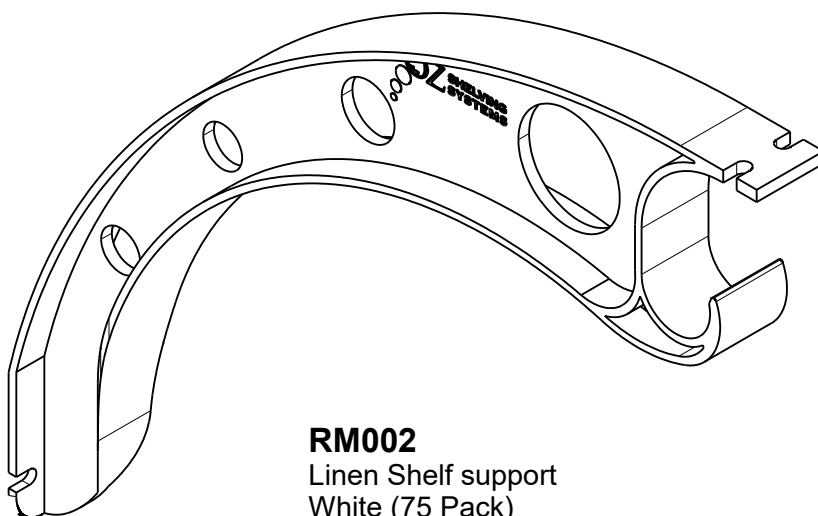
### RM008

Hanging Rod  
5.6m white (5 pack)



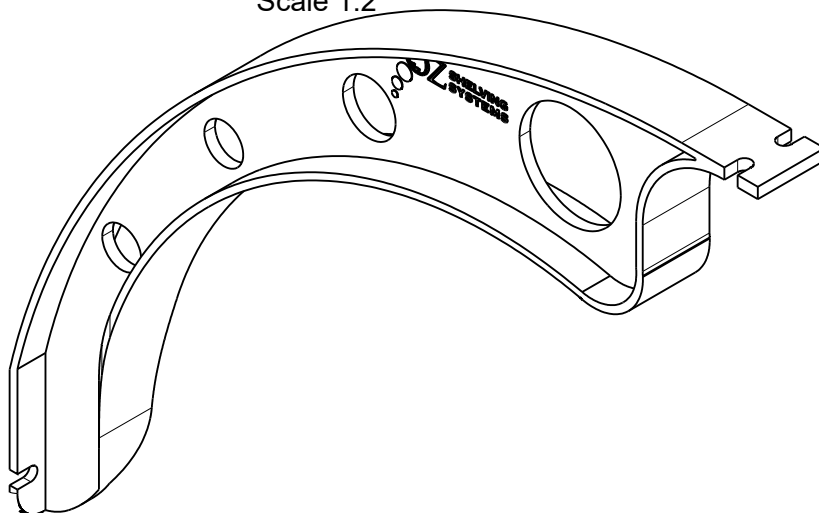
### RM001

Robe Shelf support  
White (75 Pack)  
Scale 1:2



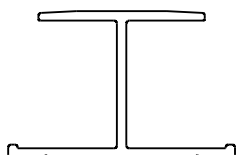
### RM002

Linen Shelf support  
White (75 Pack)  
Scale 1:2



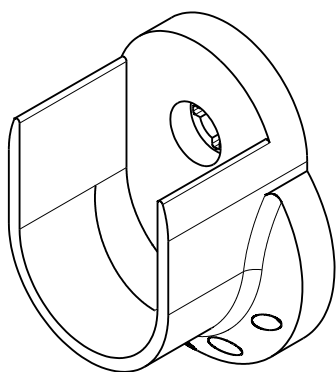
### RM016

H-Mould  
5.6m White (5 pack)



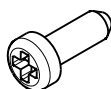
### RM004

Rod End Bracket  
White (100 pack)



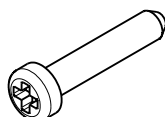
### RM013

Pan 8g x 13 screw  
White (1000 pack)



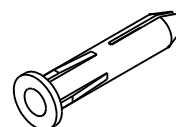
### RM025

Pan 8g x 25 screw  
White (1000 pack)



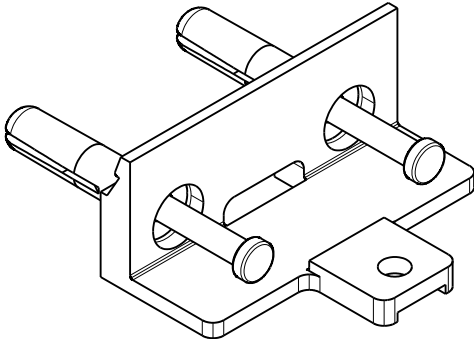
### RM009

Wall plug  
White (100 pack)



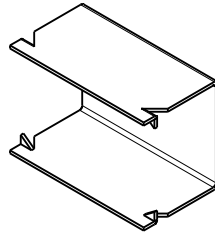
### RM012

Pre-loaded wall clip  
White (100 pack)



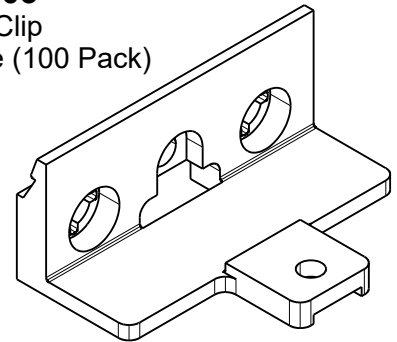
### RM014

Spring Clip  
Galvanised (1000 pack)



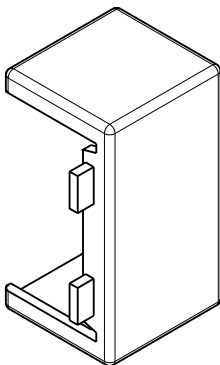
### RM003

Wall Clip  
White (100 Pack)



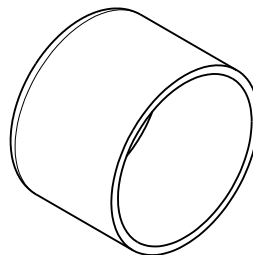
### RM017

Front channel end caps  
White (100 pack)



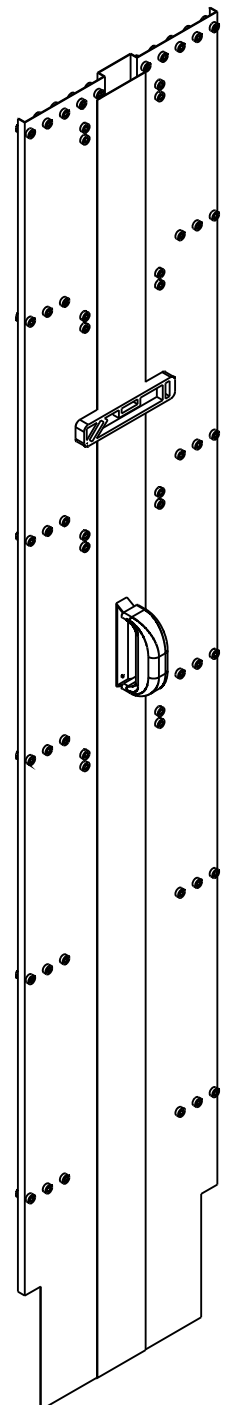
### RM007

Rod end caps  
White (100 pack)



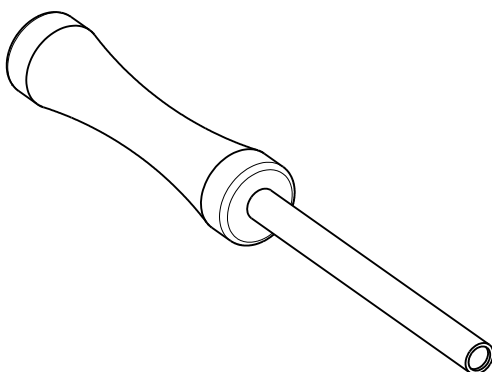
### RM001

Drill Template  
White  
Scale 1:10



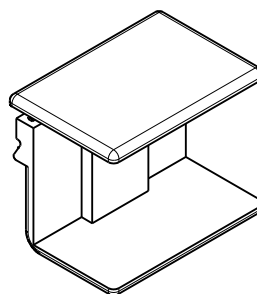
### RMPPT01

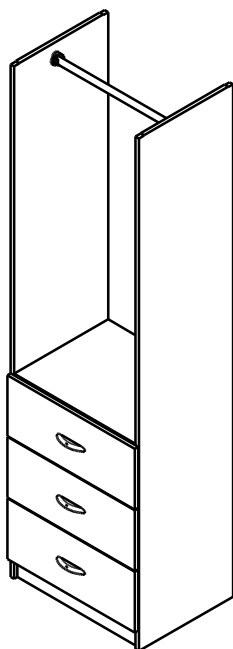
Push tool  
Scale 1:2



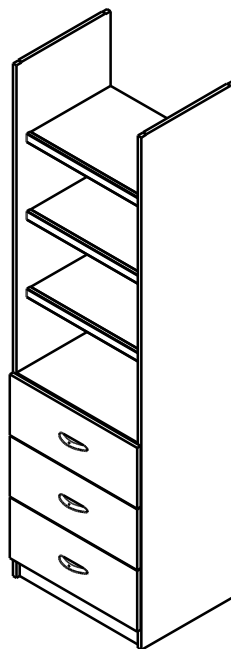
### RM015

Back channel end cap  
White (100 pack)

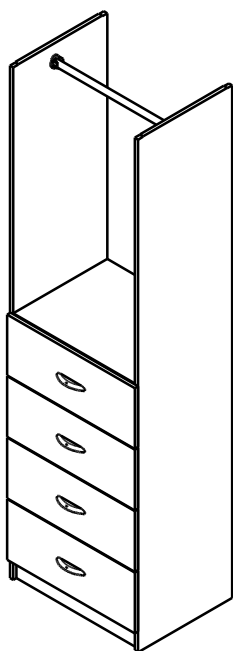




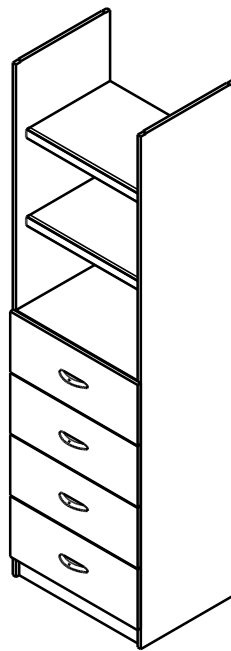
2077 x 440 - 3 Drawer with Rod



2077 x 440 - 3 Drawer 3 Shelves



2077 x 440 - 4 Drawer with Rod



2077 x 440 - 4 Drawer, 2 shelves

**Specifications:**

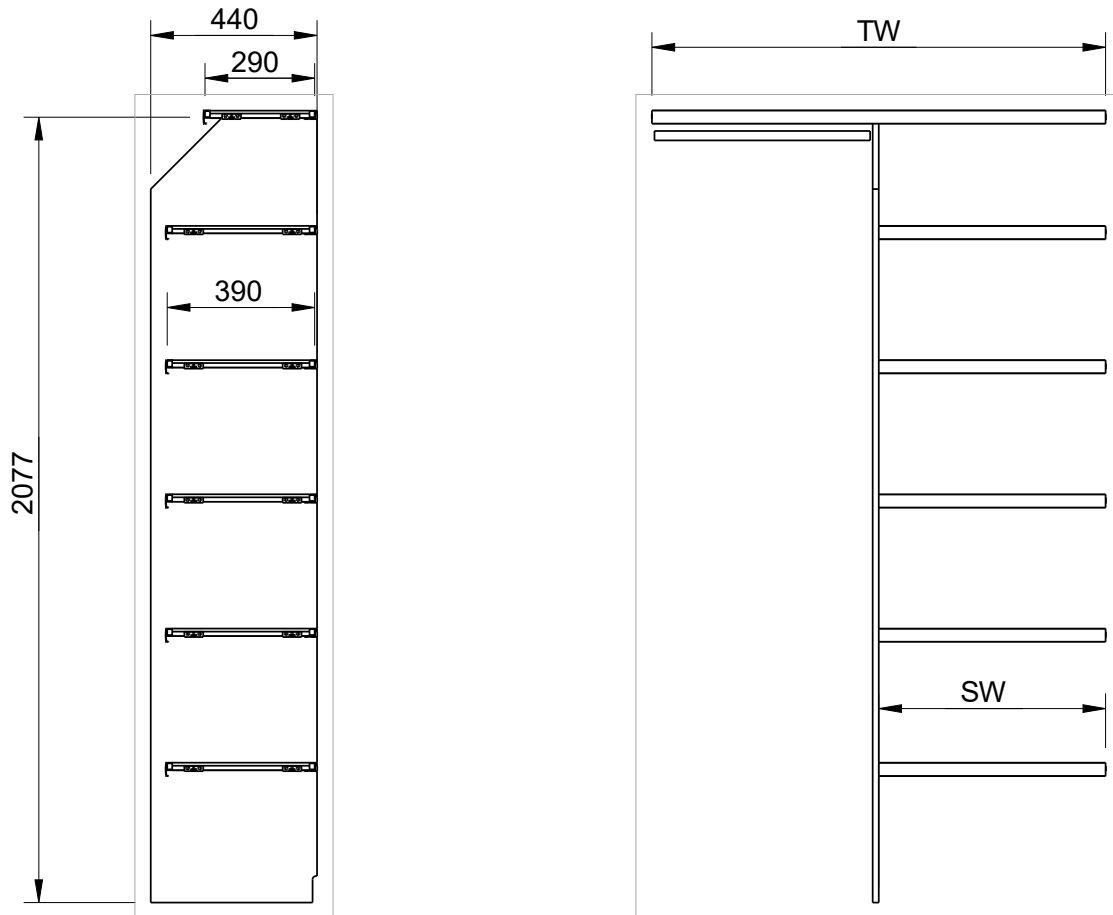
Maximum tower carcass width: 900mm

Minimum tower depth: 410mm (overlay drawer)

426mm (inlay drawers)

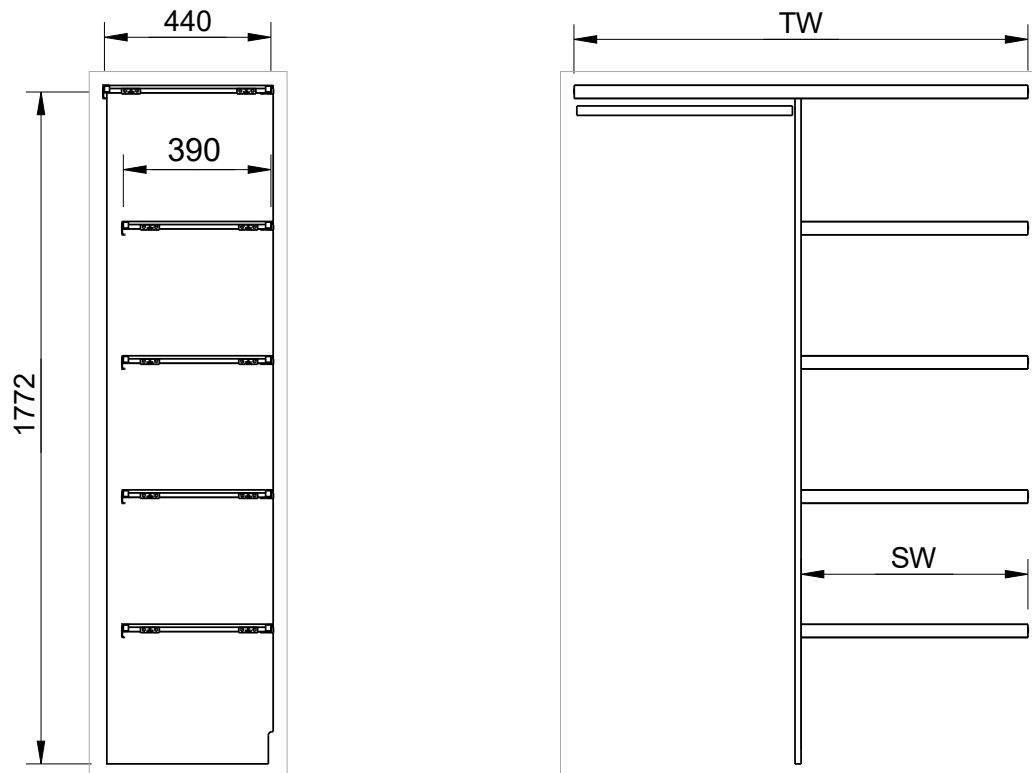
\*\*\* no top cleat, use system 32 bracket\*\*

440mm with glass top



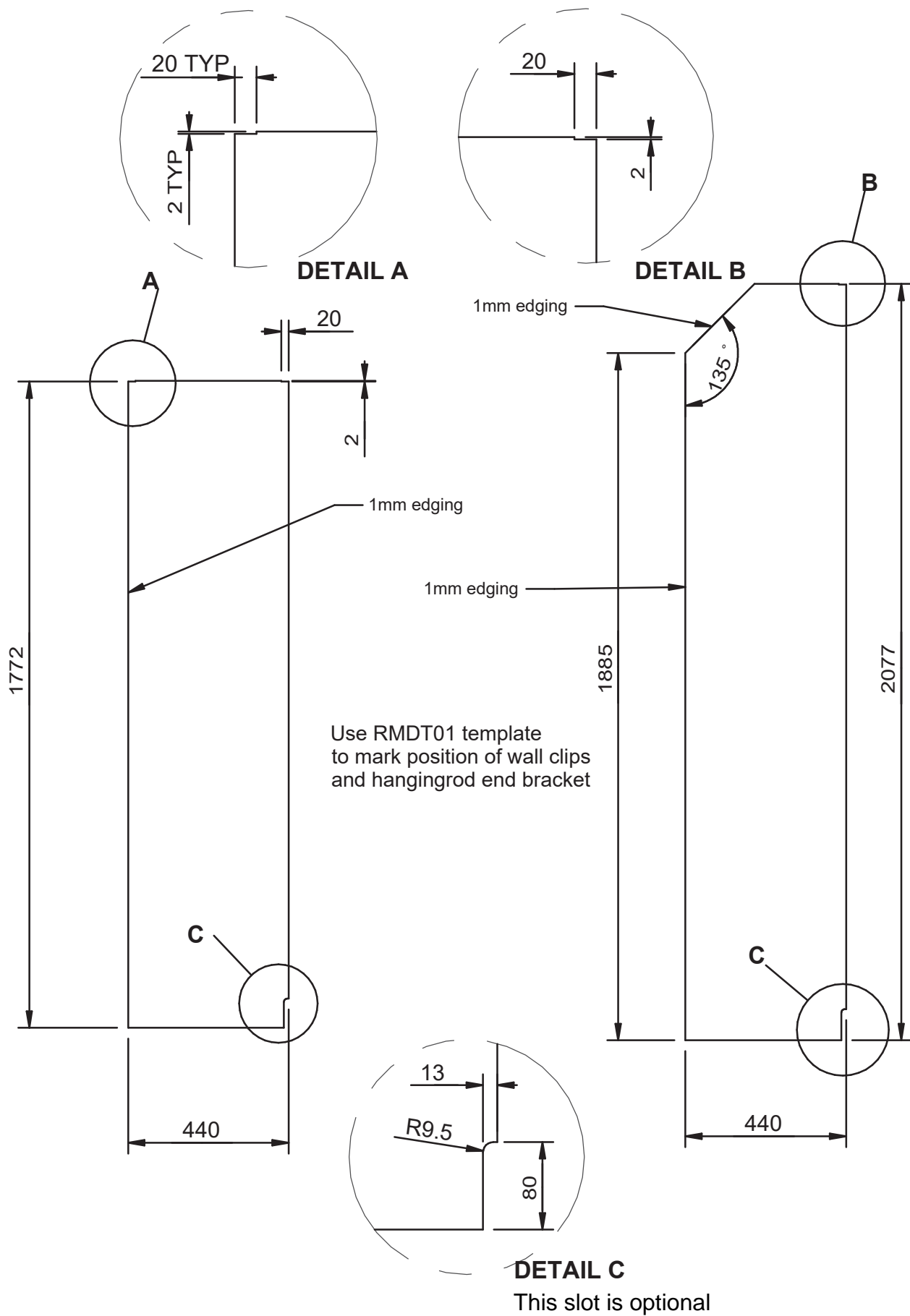
Item	Qty	Part #	Description	Size	Calculated
1	1	RM021	Gable 2077 x 440		
2	1	RM290	290 deep top shelf	TW - 18	
3	5	RM390	390 deep tower shelves	SW - 18	
4	1	RM006	Top shelf front channel	TW - 18	
5	5	RM006	Tower front channels	SW - 18	
6	2	RM005	Top shelf side channels	262	
7	1	RM005	Top shelf back channel	TW - 18	
8	10	RM005	Tower side channels	362	
9	5	RM005	Tower back channels	SW - 18	
10	1	RM008	Hanging rod	TW - SW - 31	
11	21	RM012	Pre loaded wall clip		
12	10	RM003	Wall clip		
13	2	RM004	Rod end bracket		
14	32	RM013	Pan 8g x 13 screw		
15	2	RM009	Wall plug		
16	2	RM025	Pan 8g x 25 screw		
17	14	RM014	Spring clips		
18	12	RM015	Back Channel Cap		
19	12	RM017	Front Channel Cap		



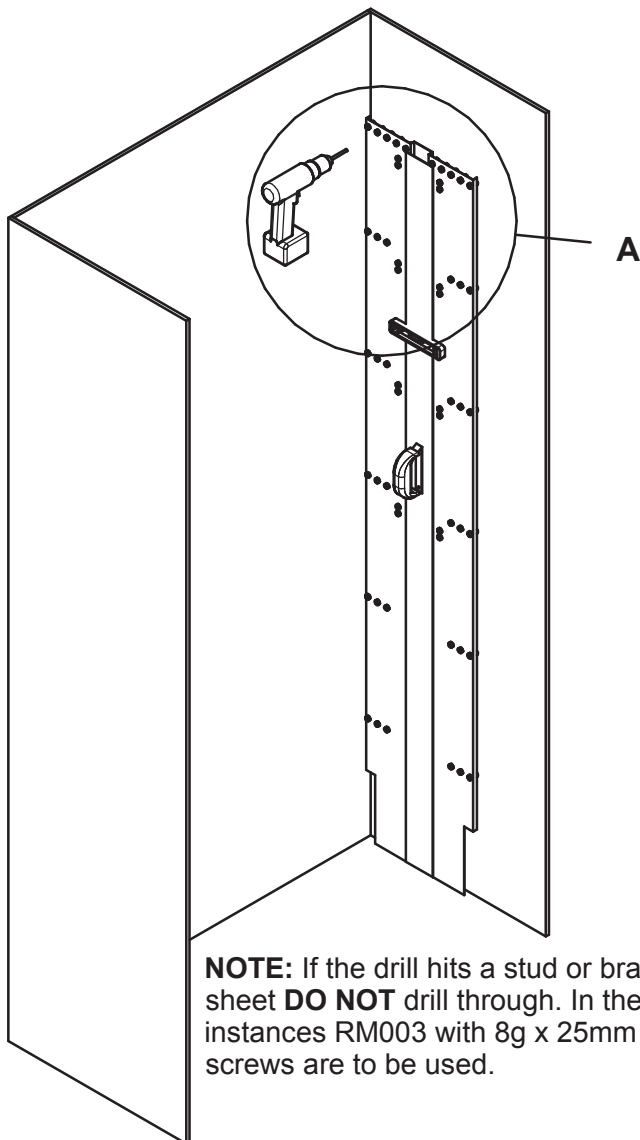


Item	Qty	Part #	Description	Size	Calculated
1	1	RM018	Gable 1772 x 440		
2	1	RM290	440 deep top shelf	TW - 18	
3	5	RM390	390 deep tower shelves	SW - 18	
4	1	RM006	Top shelf front channel	TW - 18	
5	5	RM006	Tower front channels	SW - 18	
6	2	RM005	Top shelf side channels	412	
7	1	RM005	Top shelf back channel	TW - 18	
8	10	RM005	Tower side channels	362	
9	5	RM005	Tower back channels	SW - 18	
10	1	RM008	Hanging rod	TW - SW - 31	
11	21	RM012	Pre loaded wall clip		
12	10	RM003	Wall clip		
13	2	RM004	Rod end bracket		
14	32	RM013	Pan 8g x 13 screw		
15	2	RM009	Wall plug		
16	2	RM025	Pan 8g x 25 screw		
17	14	RM014	Spring Clip		
18	12	RM015	Back Channel Cap		
19	12	RM017	Front Channel Cap		

## Gable Preparation



## Installation Step 1 & 2 - Drilling

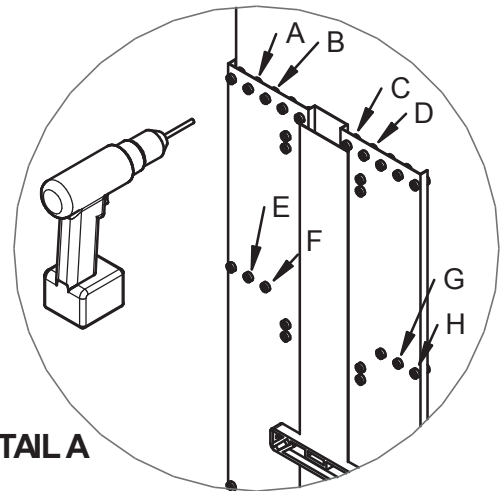


DETAIL A

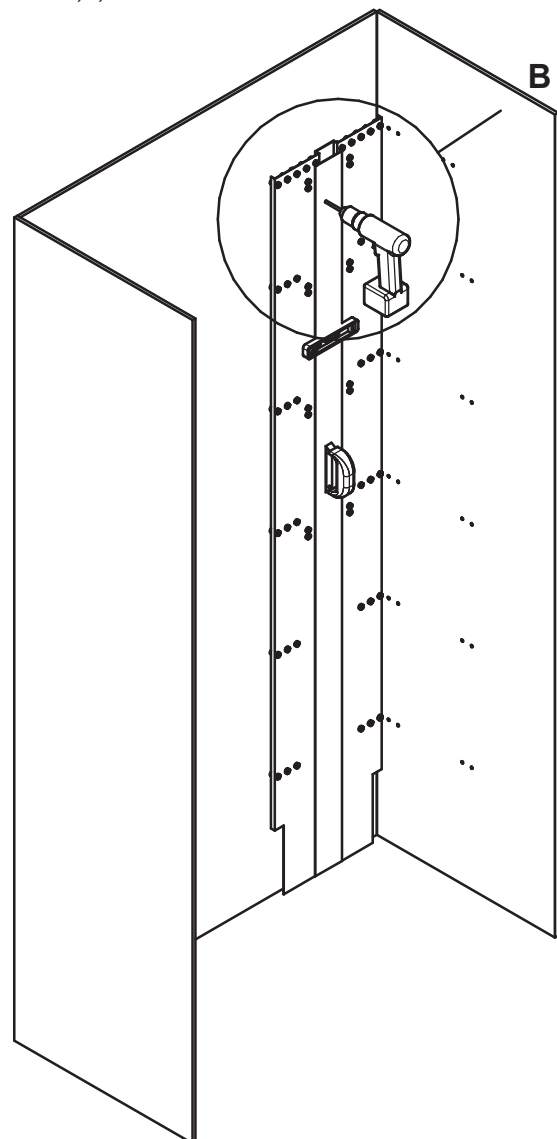
### STEP 1 Drilling end wall

For a 290mm deep top shelf,  
drill holes A,B,C & D

For 390mm or 440mm deep shelves,  
drill holes E,F,G & H.



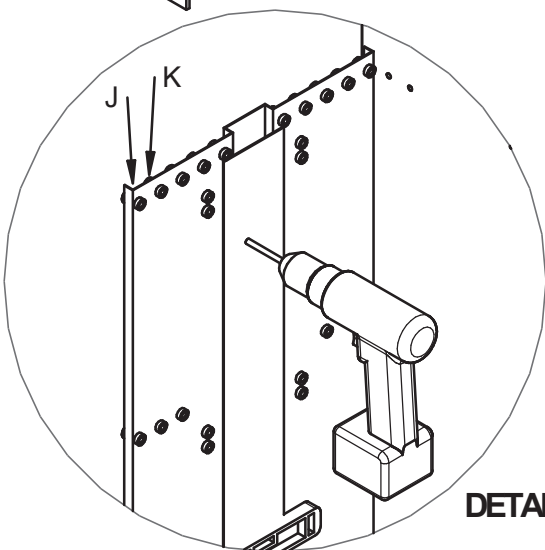
**NOTE:** If the drill hits a stud or bracing sheet **DO NOT** drill through. In these instances RM003 with 8g x 25mm screws are to be used.



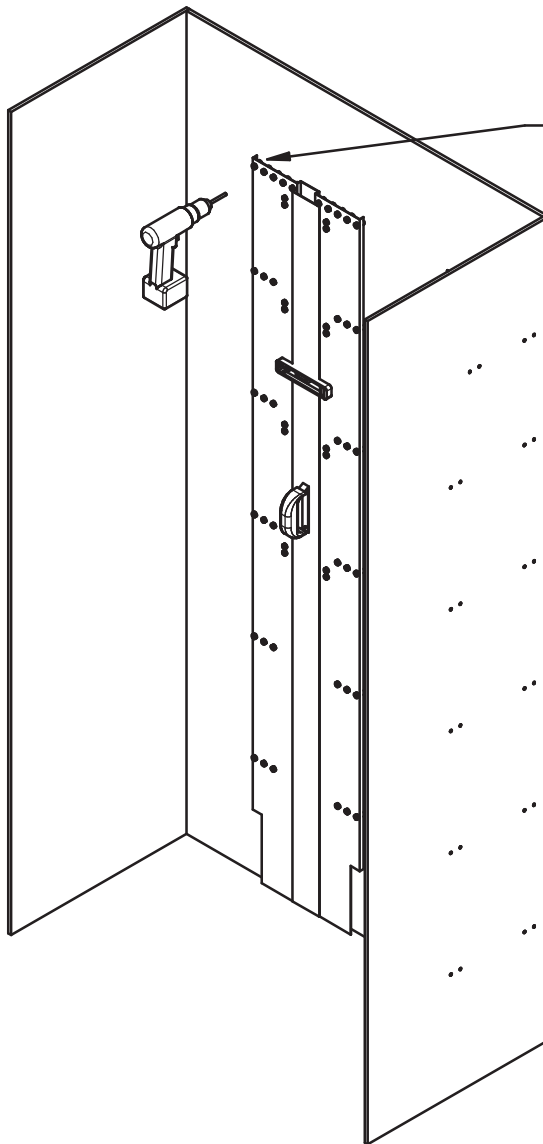
DETAIL B

### STEP 2 Drilling back wall

Drill holes J & K



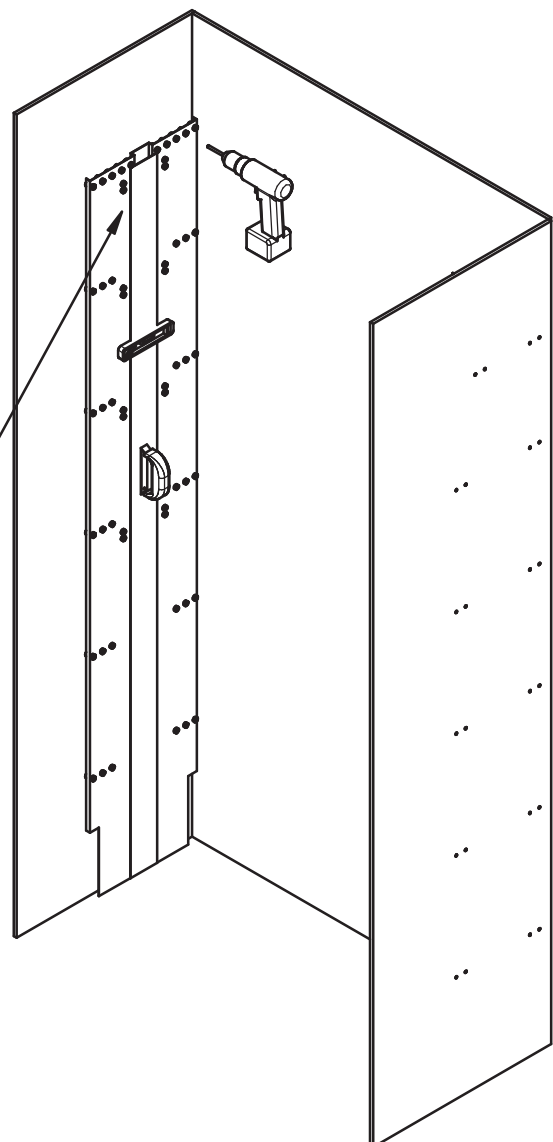
## Installation Step 3 & 4 - Drilling cont.



### STEP 3

Move RMDT01 drill template by approx 600mm, then drill the next 2 holes on the left hand side of template.

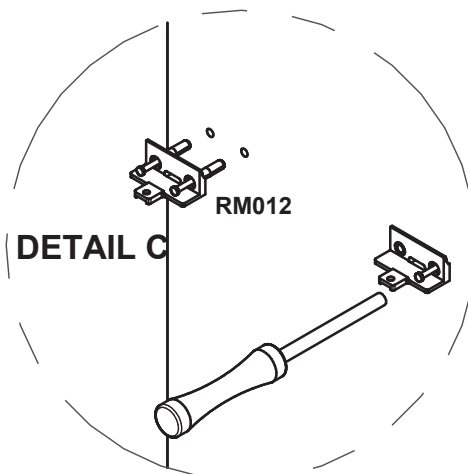
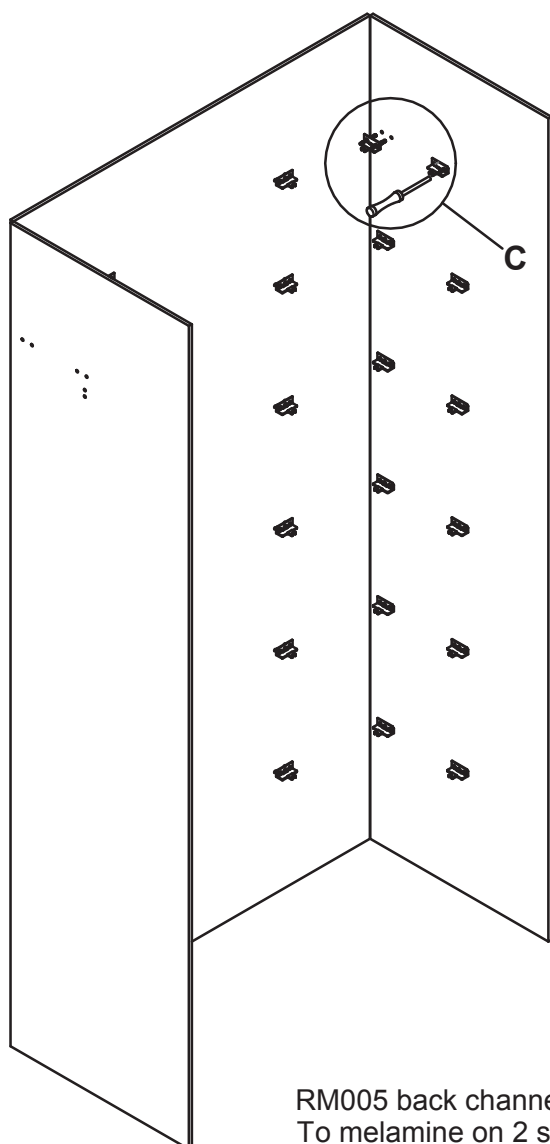
**NOTE:** If the drill hits a stud or bracing sheet **DO NOT** drill through. In these instances RM003 with 8g x 25mm screws are to be used.



### STEP 4

Finishing drilling all appropriate shelf holes not forgetting to drill the holes for the RM004 rod end bracket

## Installation Step 5 & 6 - Fit Wall Clips



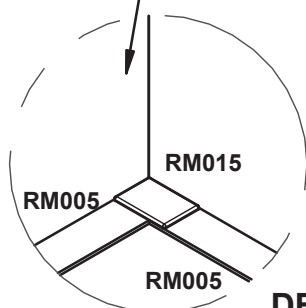
### STEP 5

Fit RM012 pre-loaded wall clips into pre-drilled wall.

**NOTE:** RM003 wall clips will need to be used when a stud or wall bracing is struck, and when bracing shelf refer installation step 13 for more details.

Using RMPPT01 push tool, push the steel pins into wall clip.

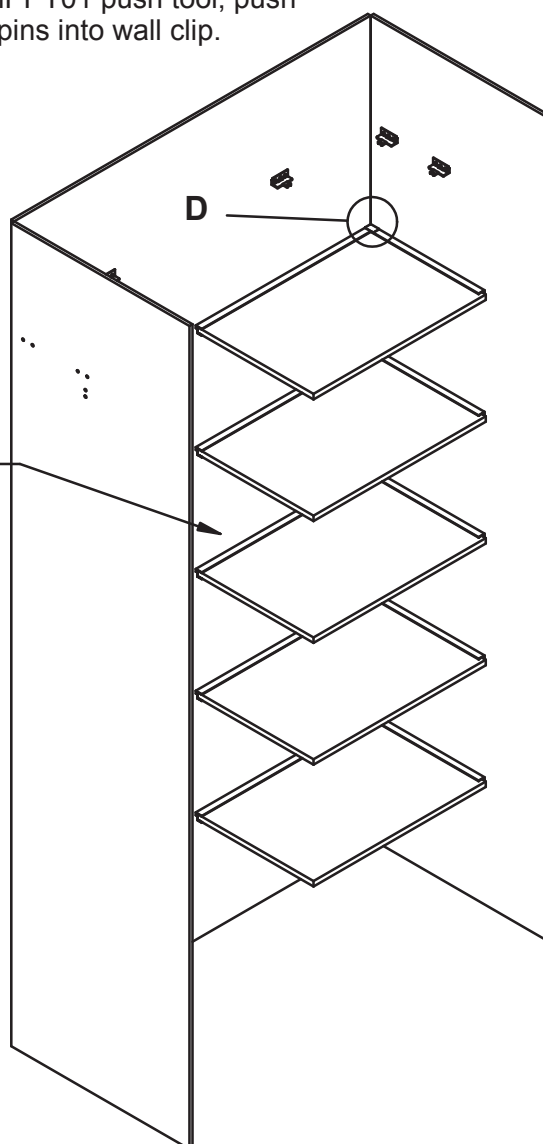
RM005 back channel to be fitted To melamine on 2 sides.  
Also fit RM015 back channel end cap to side wall channel.



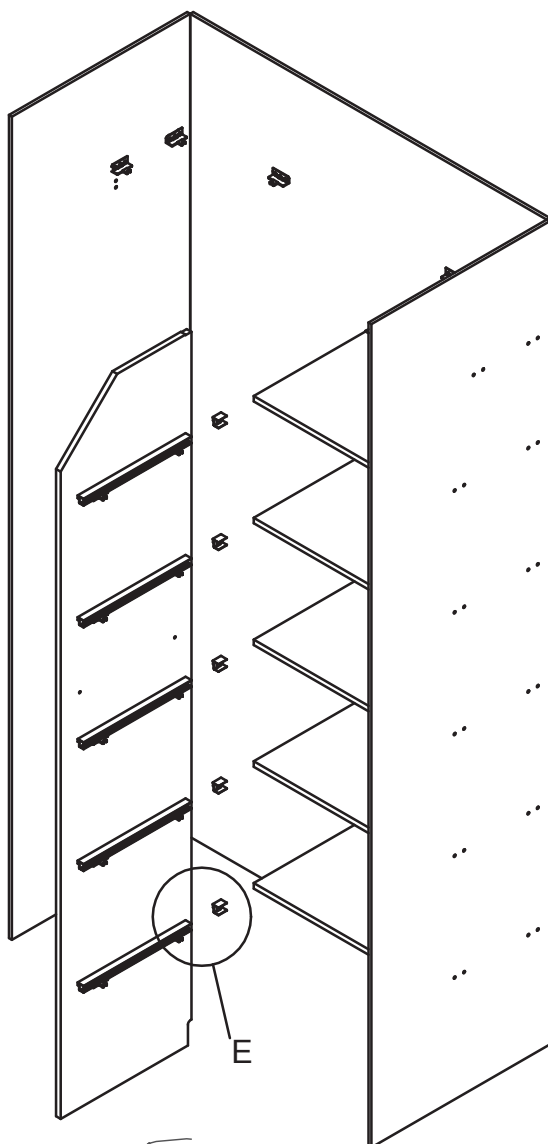
### DETAIL D

### STEP 6

Starting from the bottom shelf, place shelf so that RM005 back channel fits over wall clip tapping down at each wall clip position so as to secure in place.

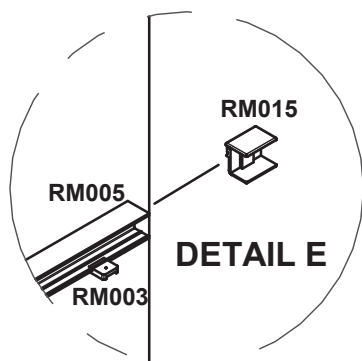


## **Installation Step 7 & 8 - Fit Gable & Top Shelf**



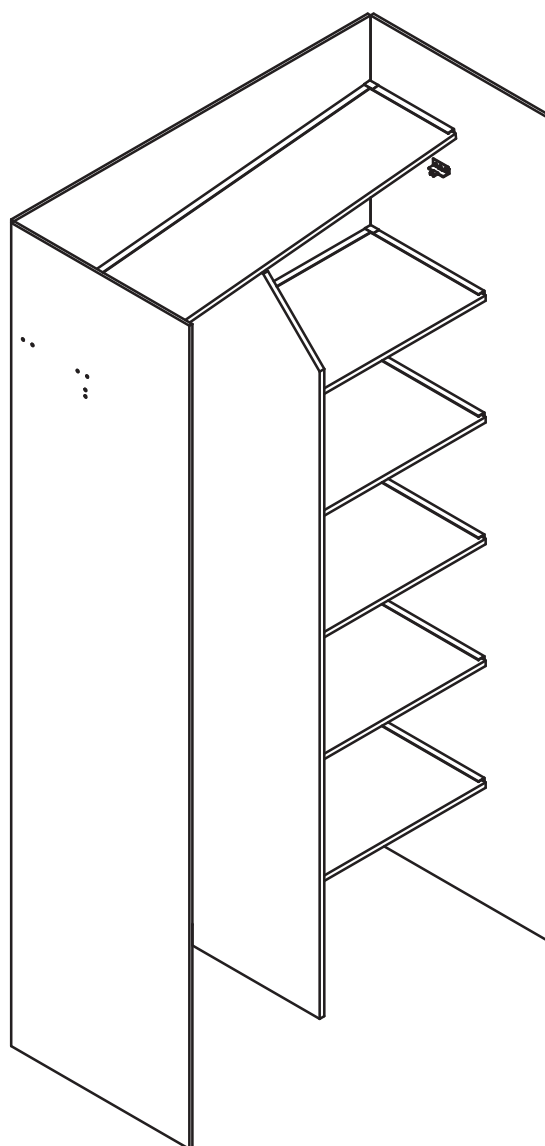
### **STEP 7**

With RM003 wall clips fastened to gable and RM005 channel clipped on, slide gable onto end of shelves. RM015 also needs to be fitted on the end of the RM005 channel.

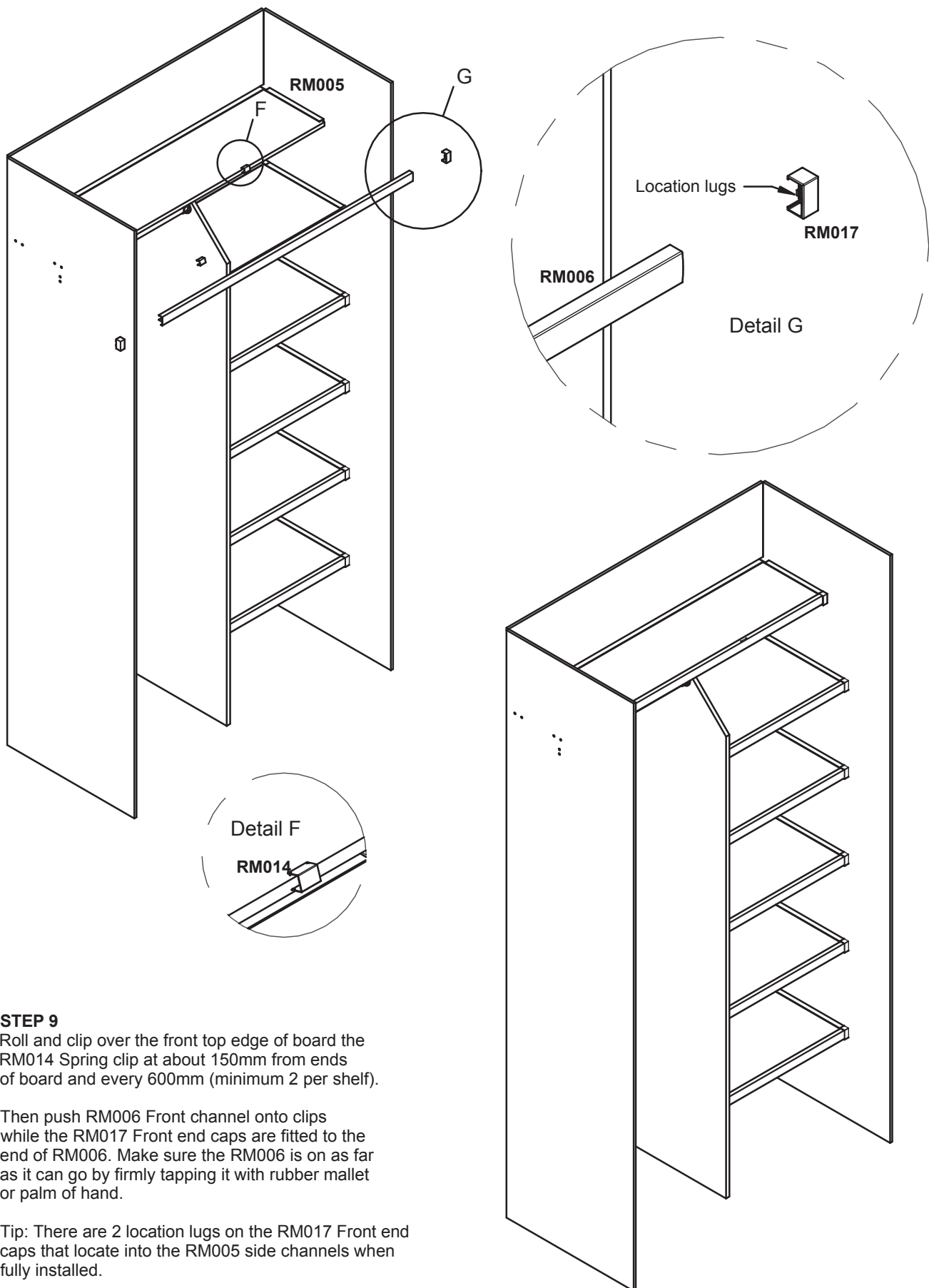


### **STEP 8**

With RM005 back channel on 3 sides of top shelf, locate one end, then lower the over end into place tapping down at where the wall clip are positioned to secure shelf in place.



## Installation Steps 9 & 10 -Front Channel



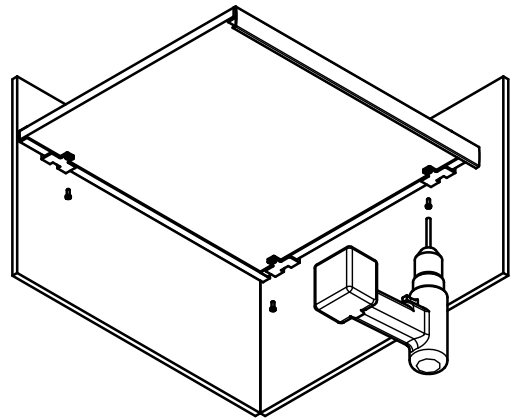
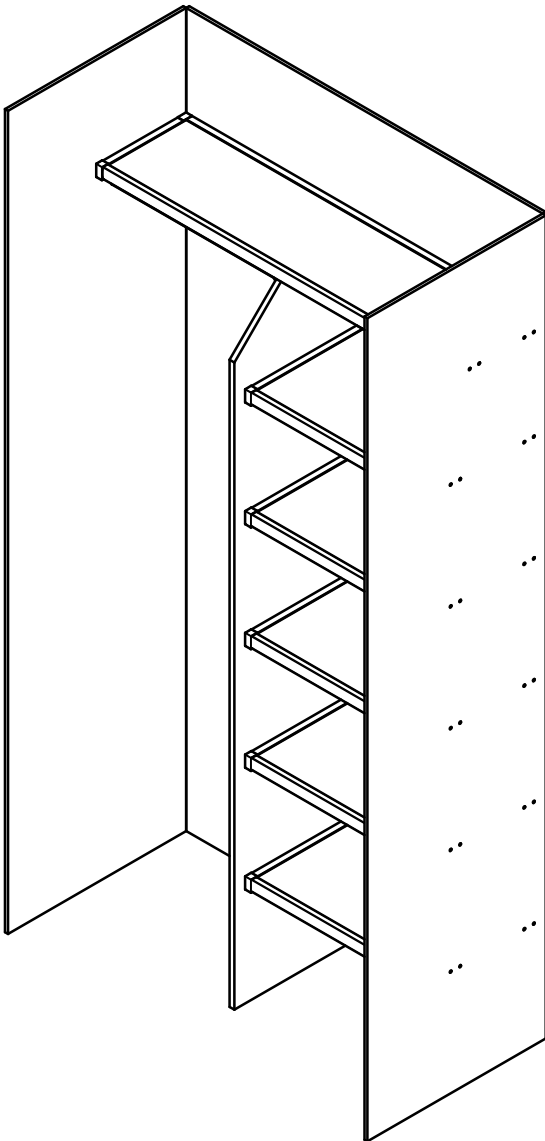
### STEP 9

Roll and clip over the front top edge of board the RM014 Spring clip at about 150mm from ends of board and every 600mm (minimum 2 per shelf).

Then push RM006 Front channel onto clips while the RM017 Front end caps are fitted to the end of RM006. Make sure the RM006 is on as far as it can go by firmly tapping it with rubber mallet or palm of hand.

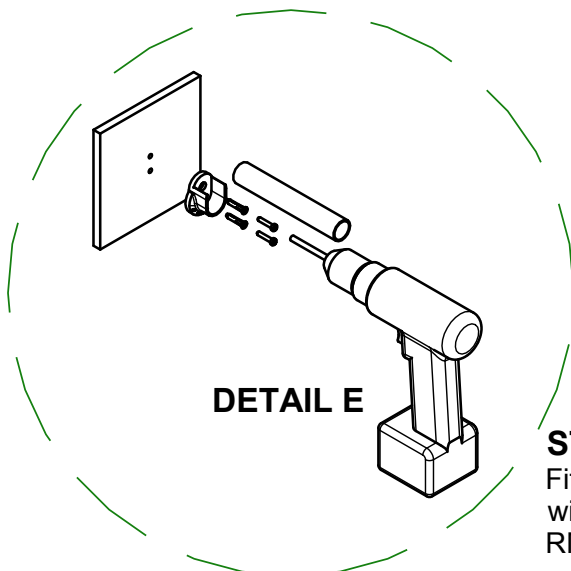
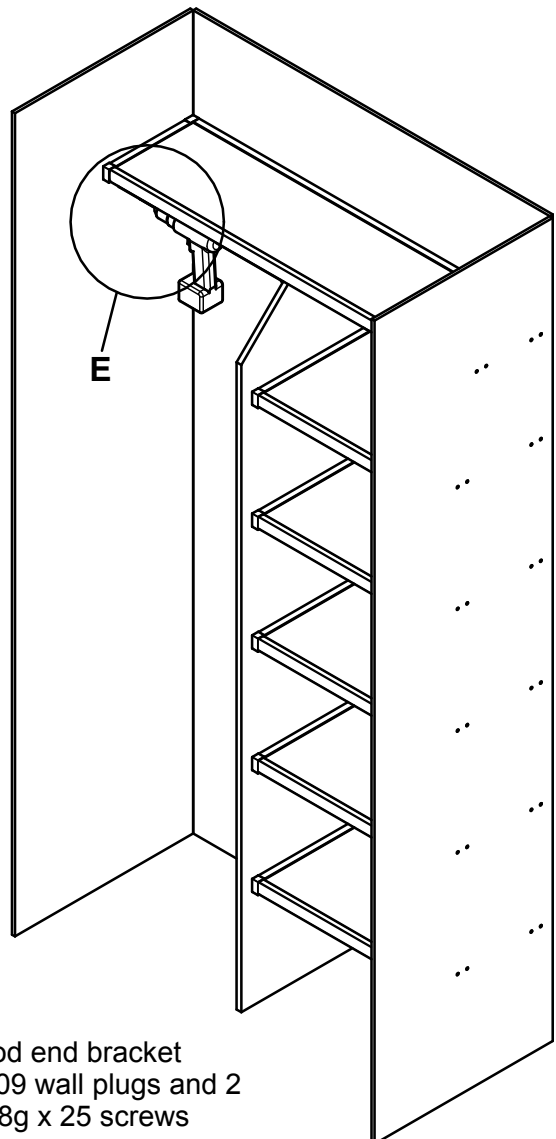
Tip: There are 2 location lugs on the RM017 Front end caps that locate into the RM005 side channels when fully installed.

## Installation Step 11 & 12 - Fit Hanging Rod & Lock Shelves to Wall



### STEP 11

Fasten through wall clips with RM013 pan 8g x 12 screws @ 600 ctrs with a minimum of 3 screws per shelf.



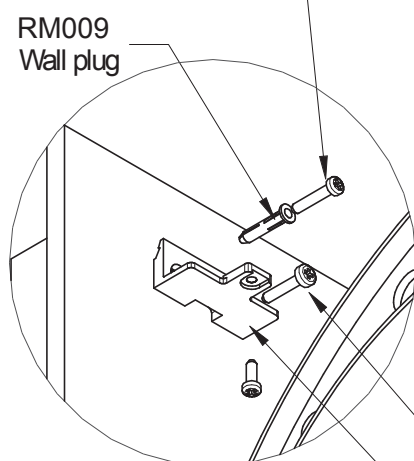
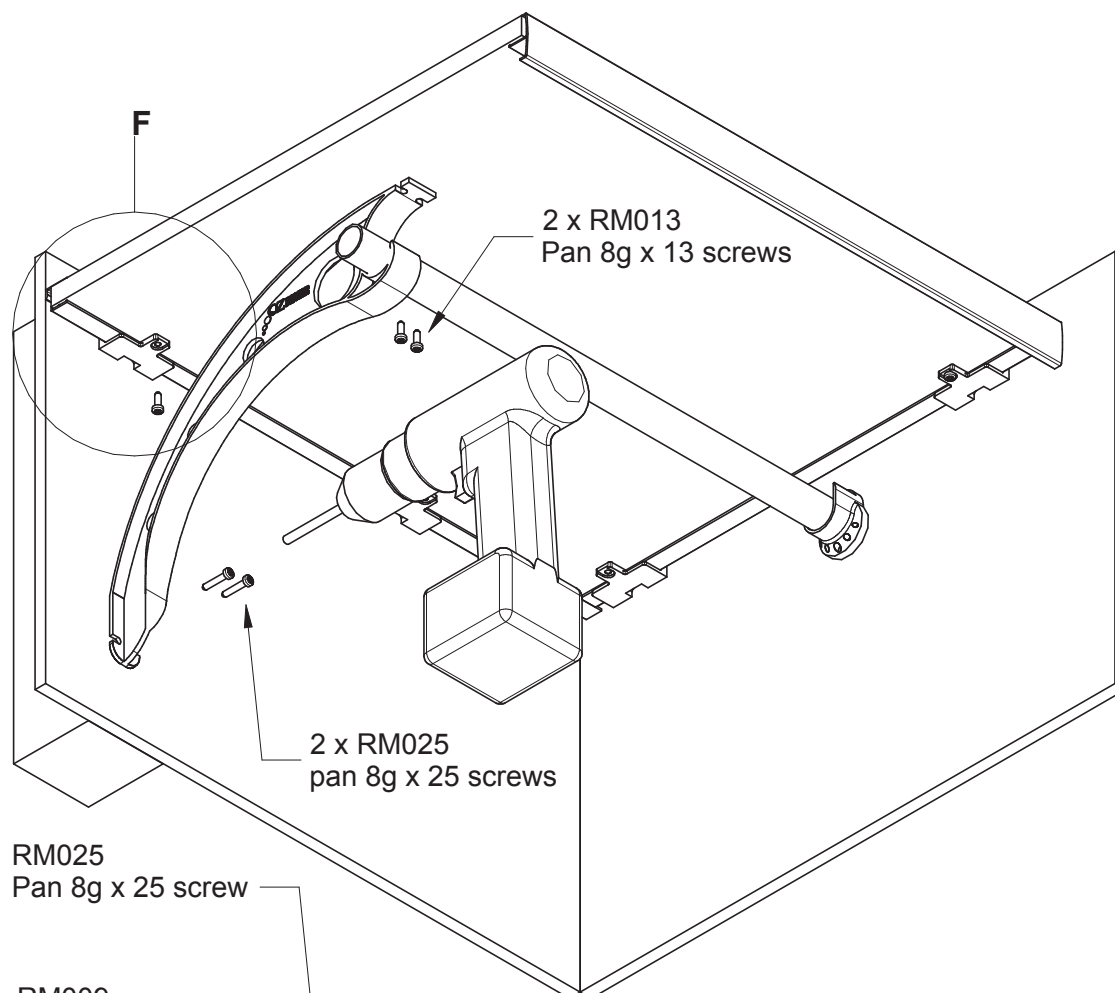
### DETAIL E

### STEP 12

Fit RM004 rod end bracket with 2 RM009 wall plugs and 2 RM025 pan 8g x 25 screws

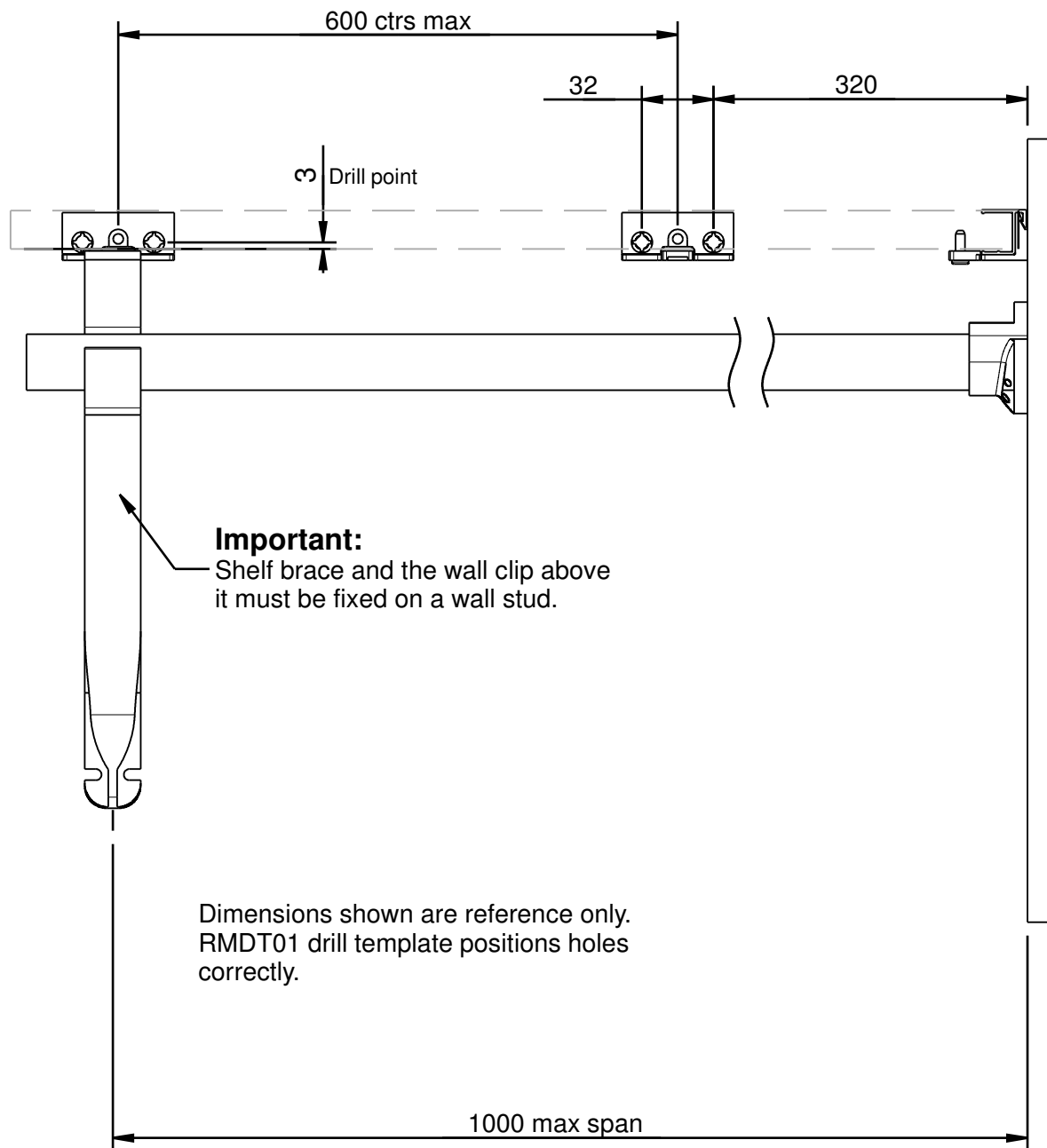


## Installation Step 13 - Bracing Shelf

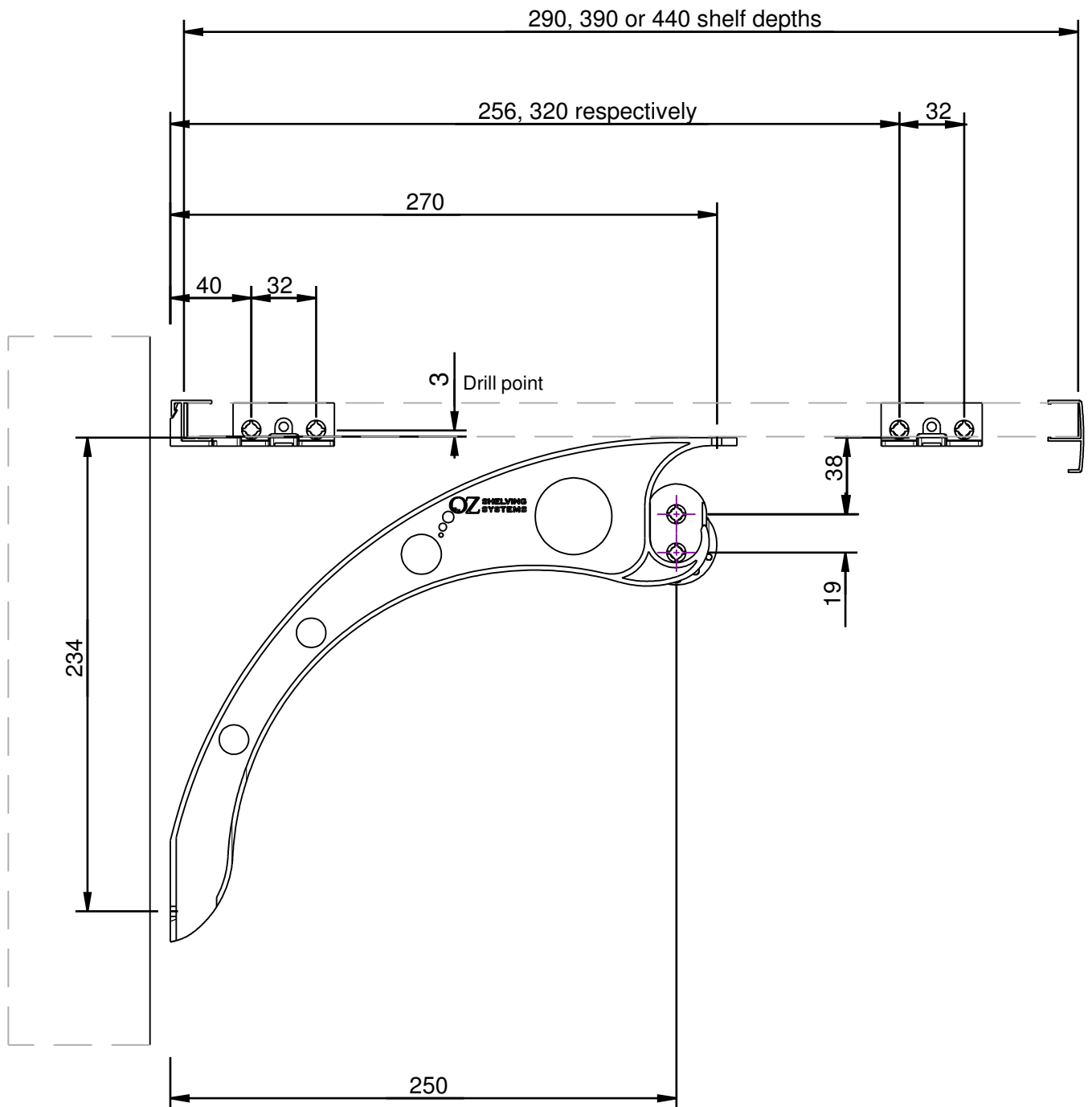


**NOTE:** Shelf brace must always pick up on a wall stud. To do this use a RM003 wall clip. Ensure that the wall clip above brace is fixed to the stud with at least one pan head 10g x 25 screw. The second hole is likely to miss the stud, therefore fix off with RM009 wall plug and pan head 8g x 25 screw.

## Front View of Fixing Locations

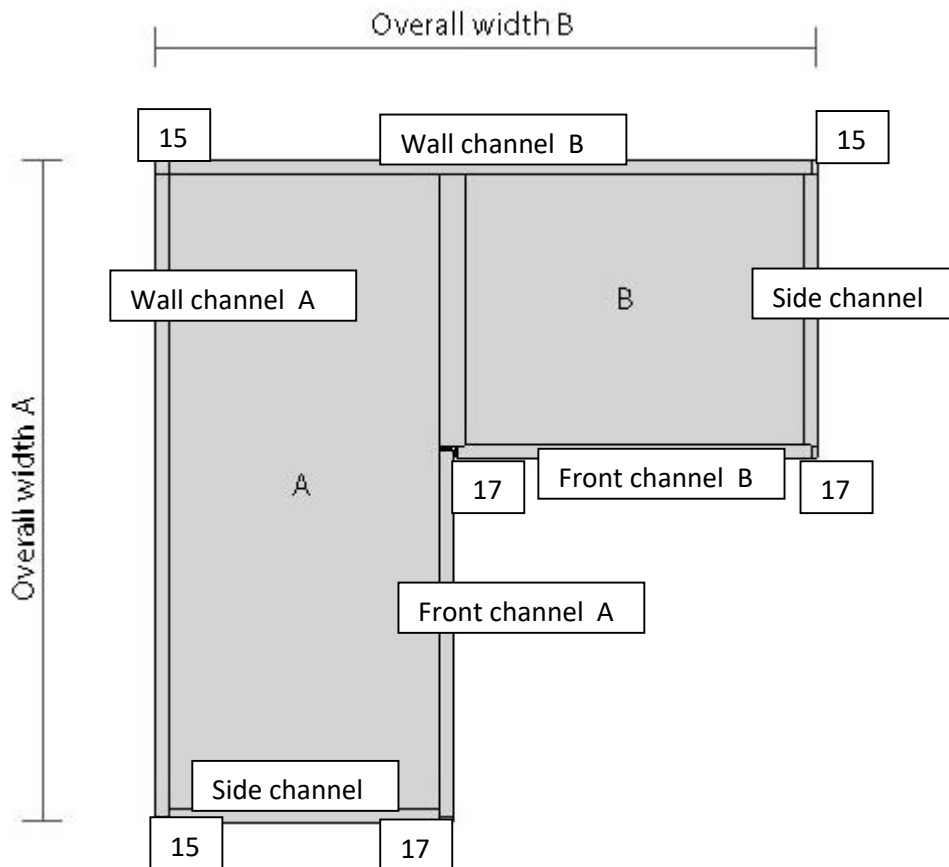


## End View of Fixing Location



Dimensions shown are reference only.  
RMDT01 drill template positions holes correctly.

## L shape cutting formula



### Definitions

Overall Width = OW

Board depth = size of melamine

15 = RM015 back cap

17 = RM017 front cap

### Cut Formulas

Wall channel 'A' = OW 'A' - 18

Board 'A' = OW 'A' - 18

Front channel 'A' = OW 'A' - ('B' board depth + 10)

Side channels & H mould = board depth - 28

Wall channel 'B' = OW 'B' - 30

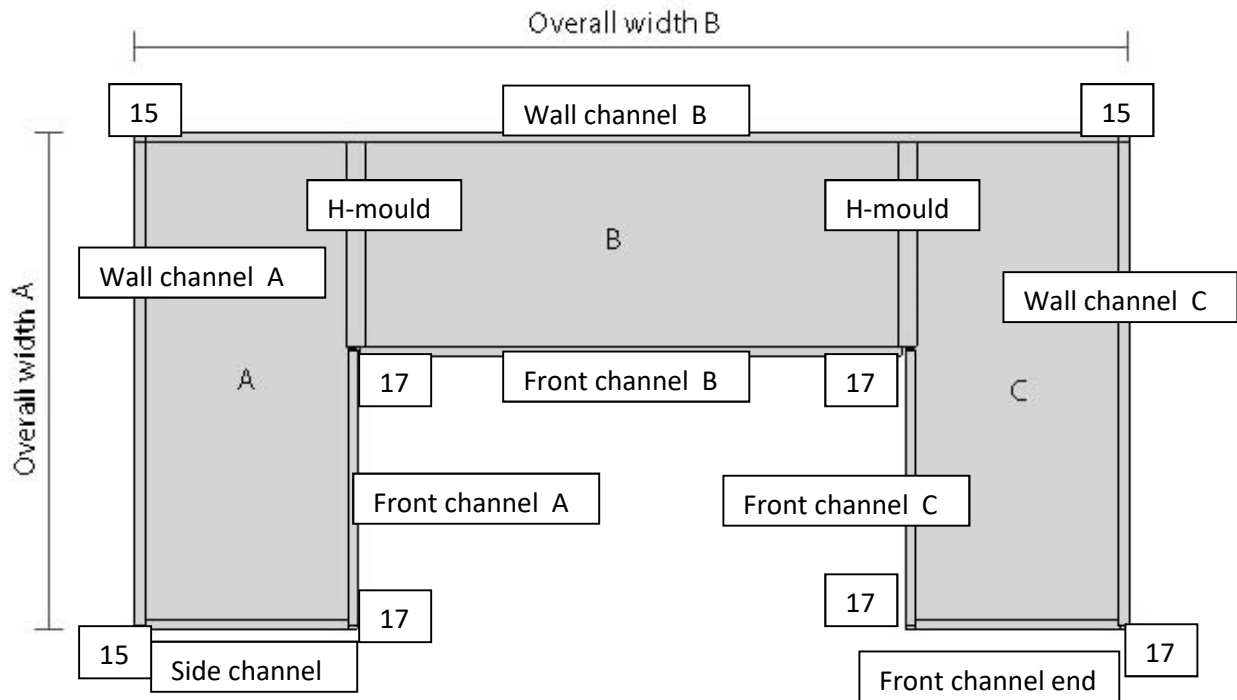
Board 'B' = OW 'B' - ('A' board depth + 24)

Front channel 'B' = OW 'B' - ('A' board depth + 24)

RM015 back caps fit onto one end side channels and one end of wall channel 'B'

RM017 front caps fit onto front channels both ends 'A' and one end of 'B'

## U shape cutting formula (with right side open ended)



### Definitions

Overall Width = OW

Board depth = size of melamine

15 = RM015 back cap

17 = RM017 front cap

### Cut Formulas

Wall channel 'A' = OW 'A' - 18

Board 'A' = OW 'A' - 18

Front channel 'A' = OW 'A' - ('B' board depth + 7)

Side channels & H mould = board depth - 28

Wall channel 'B' = OW 'B' - 42

Board 'B' = OW 'B' - ('A' board depth + 'C' board depth + 30)

Front channel 'B' = OW 'B' - ('A' board depth + 'C' board depth + 30)

Wall channel 'C' = OW 'C' - 28

Board 'C' = OW 'C' - 18

Front channel 'C' = OW 'C' - ('B' board depth - 10)

Front channel end = 'C' board depth - 18

RM015 back caps fit onto one end side channel and both ends of wall channel 'B'

RM017 front caps fit onto both ends of front channels 'A' & C

---

## SIMPLY BETTER STORAGE SYSTEMS

Unit 1/3471 Ipswich Road Wacol Queensland 4076  
Ph: 07 3879 4099 Email: [sales@ozshelving.com.au](mailto:sales@ozshelving.com.au)  
**[www.ozshelving.com.au](http://www.ozshelving.com.au)**